



Information Sheet IS20004A

Installation and User Guide for the Nautel Legacy AUI Access App

Issue 1.2 09 December 2020

Nautel Limited
10089 Peggy's Cove Road,
Hackett's Cove, NS, Canada B3Z 3J4
T.877 6 nautel (628835) or +1.902.823.2233
F.+1.902.823.3183 info@nautel.com

U.S. customers please contact:
Nautel Inc.
201 Target Industrial Circle, Bangor ME 04401
T.877 6 nautel (628835) or +1.207.947.8200
F.+1.207.947.3693 info@nautel.com

e-mail: support@nautel.com
www.nautel.com

IS20004A: Installing and Using the Nautel Legacy AUI Access App

INFORMATION SHEET

1 INTRODUCTION

This document describes how to install and use the second release of the Nautel Legacy AUI Access application.

- The Nautel Legacy AUI Access app is a standalone desktop app that runs on Windows and macOS.
- The Launcher enables you open windows for each transmitter's Flash-based AUI.
- Each transmitter IP is remembered so you can quickly connect when you open the app.

1.1 Equipment Affected

This information sheet applies to all Nautel broadcast transmitters that use a remote AUI – GV, NVLT, NV, and VS series FM transmitters, and NX series AM transmitters.

1.2 Minimum Software Requirements

Your transmitter must meet the minimum software requirements listed below to use the Nautel Legacy AUI Access application:

- GV Series: GV SW 4.3.3 or newer
- NV Series: NV SW 4.2.8 or newer
- NVLT Series: NVLT SW 4.3.5 or newer
- NX Series: NX SW 4.5.2 or newer
- VS Series: VS SW 4.2.3 or newer

1.3 Responsibility for Implementation

This procedure can be carried out by anyone qualified to install software to a computer and know the IP address(es) of the transmitter(s) they wish to connect to.

1.4 Scheduling

The Nautel Legacy AUI Access App can be installed immediately but should be installed prior to the end-of-life support date for Adobe Flash Player on December 31st, 2020. The transmitter can remain "on air" during this procedure, as the installation is only to computers that connect to the transmitter.

1.5 Manpower Requirements

Implementing these instructions will require approximately five (5) minutes.

1.6 Special Tools/Test Equipment

No special tools/test equipment are required to complete the procedure. If you have not already downloaded the software, you will require a connection to the internet to obtain the files from the Nautel FTP site.



1.7 Materials

No special materials are required to complete the procedure.

1.8 Publications Affected

This modification does not affect the transmitter's documentation.

2 SUPPORTED PLATFORMS FOR INSTALLATION

Both Windows 7 (or above) and macOS v10.10 (or above) platforms are supported for app operation.

The required software is available from the following Nautel FTP site:

ftp://www3.nautel.com/Legacy_AUI_Access/

3 INSTALLING THE APPLICATION

The second release of the Nautel Legacy AUI Access app has been packaged as a single executable that no longer depends on the installation of Adobe AIR or Adobe Flash Player.

- If accessing the AUI is the only Flash-dependent or AIR-dependent software you run on your system, uninstall both Adobe AIR and Adobe Flash Player.
- The reason for this change is to ensure that future updates to Adobe AIR or Flash Player will not affect the app.
- No changes have been made to the features or behaviour of the Nautel Legacy AUI Access app.

The application requires the following steps to be completed:

- (a) If you installed the first release of the Nautel Legacy AUI Access app, uninstall its components prior to using the second release in the following order:
 - i. Uninstall the Nautel Legacy AUI Access app
 - ii. Uninstall Adobe Flash Player (unless you still use it for something else)
 - iii. Uninstall Adobe AIR (unless you still use it for something else)
- (b) Follow the detailed installation instructions in section 4 (Windows) or 5 (macOS) for your platform.
- (c) Refer to section 6 for information on using the Nautel Legacy AUI Access App.



4 DETAILED INSTALLATION – WINDOWS

- (a) Download the Windows ZIP file from the Nautel FTP.
- (b) Unzip the files – by right-clicking on the downloaded file and choosing “Extract All” – to an appropriately named folder on your Windows desktop (e.g. “Nautel Legacy AUI Access”, see Figure 1).

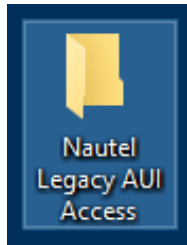


Figure 1: App folder on Windows Desktop

- (c) Once unzipped, locate “Nautel Legacy AUI Access.exe” and double-click it to run the app (see Figure 2).
- (d) Optional:
 - i. Create a Desktop shortcut
 - Right-click on “Nautel Legacy AUI Access.exe” and choose “Create shortcut” from the context menu.
 - Rename the Desktop shortcut to “Nautel Legacy AUI Access”
 - Drag the newly created shortcut to your Desktop
 - ii. Add app to Taskbar
 - With the app running, right-click on the app icon in the Taskbar and choose “Pin to taskbar”

5 DETAILED INSTALLATION – macOS

- (a) Download the macOS ZIP file from the Nautel FTP.
- (b) Unzip the files.
- (c) Drag the application file to the Applications folder.
- (d) Optional:
 - i. Create a Desktop Alias (shortcut)
 - Right-click on app icon and choose “Make Alias”
 - Drag alias to your Desktop
 - ii. Add app to Dock
 - With the app running, right-click on the app icon in the Dock and choose Options | “Keep in Dock”



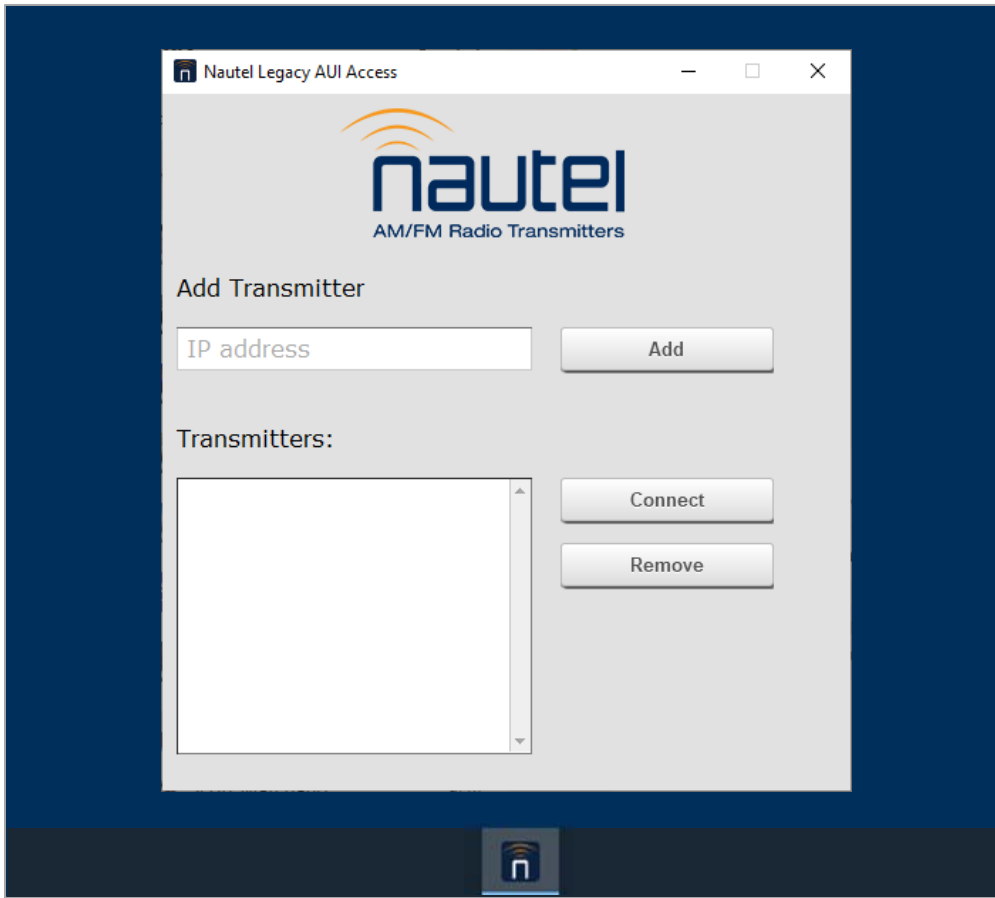


Figure 2: App user interface on Windows

6 USING THE NAUTEL LEGACY AUI ACCESS APPLICATION

The following functions are described in this document:

- Add/Remove Transmitter – see section 6.1
- AUI Login Window – see section 6.2
- Multiple Sessions – see section 6.3
- Ending Session(s) – see section 6.4
- Tips – see section 6.5

6.1 Add/Remove a Transmitter

See Figure 3.

- (a) Enter an AUI transmitter's IP address in the *Add Transmitter* field and click **Add**.
- (b) Select the IP address from the *Transmitters* list and click **Connect**. The AUI login window should appear (see section 6.2).
- (c) To remove a transmitter, select the appropriate IP address from the *Transmitters* list and click **Remove**.

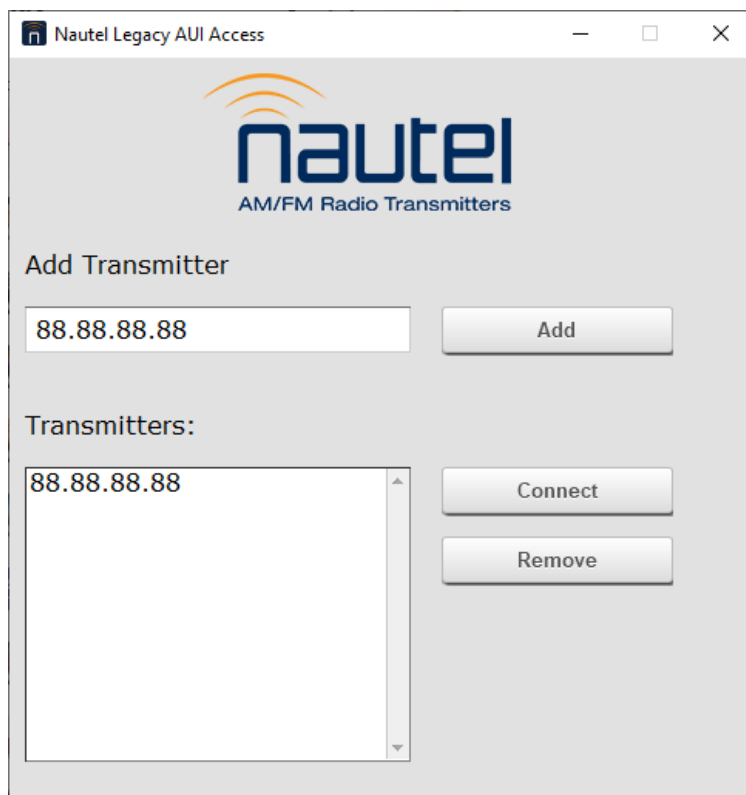


Figure 3: Add/Remove Transmitter



6.2 AUI Login Window

See Figure 4.

- (a) When a successful connection has been established with a transmitter (see section 6.1), a new window opens to show the login for the selected transmitter.
- (b) Enter the User and Password names and click **Submit**.
- (c) Operate the AUI as desired. Refer to the transmitter's *Operations and Maintenance Manual* for complete details.

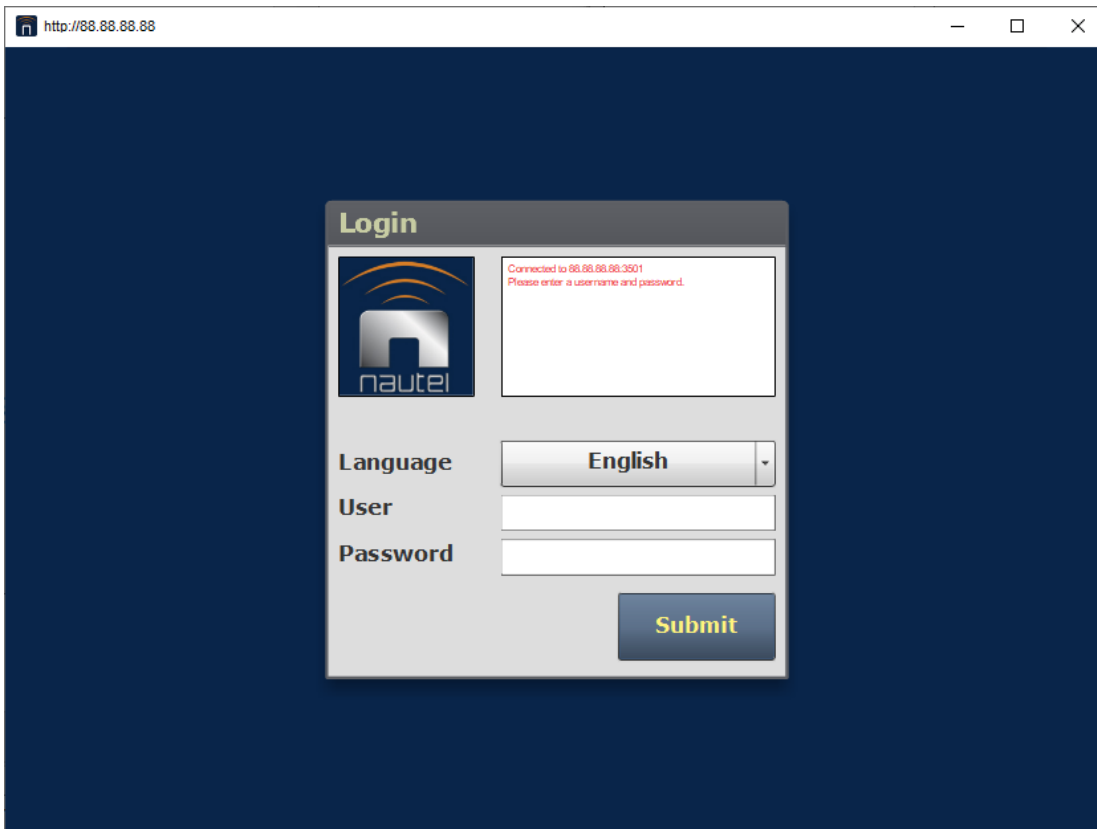


Figure 4: AUI Login Window

6.3 Multiple Sessions

It is permissible to open multiple AUI sessions, for additional transmitters or the same transmitter. See Figure 5.

- Add transmitters to the Transmitters list (see section 6.1) and connect to them; each opens in a new AUI login window.
- You can also open multiple windows for the same transmitter.

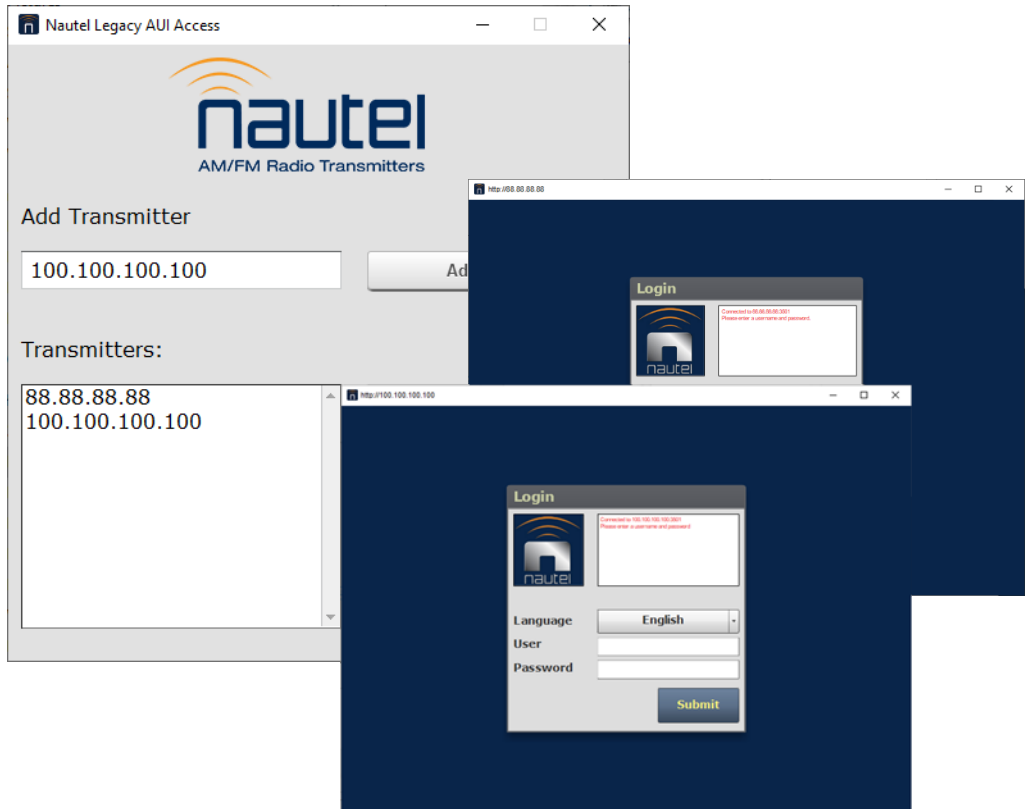


Figure 5: Multiple AUI Sessions



6.4 Ending Session(s)

To end an AUI session, logout of the AUI and click the **X** in the top right corner of the AUI window to close it.

The AUI Launcher and other AUI sessions, as applicable, will remain live until you close them in the same way.

6.5 Tips

- If you close the AUI Launcher window, you must close all AUI windows before you can restart the AUI Launcher from the Windows app menu.
- To add the AUI Launcher to your Windows Taskbar, right-click on the AUI Launcher taskbar icon while it is operating and select *Pin to taskbar* (see Figure 6). On a macOS, select **Options | Keep in Dock**.

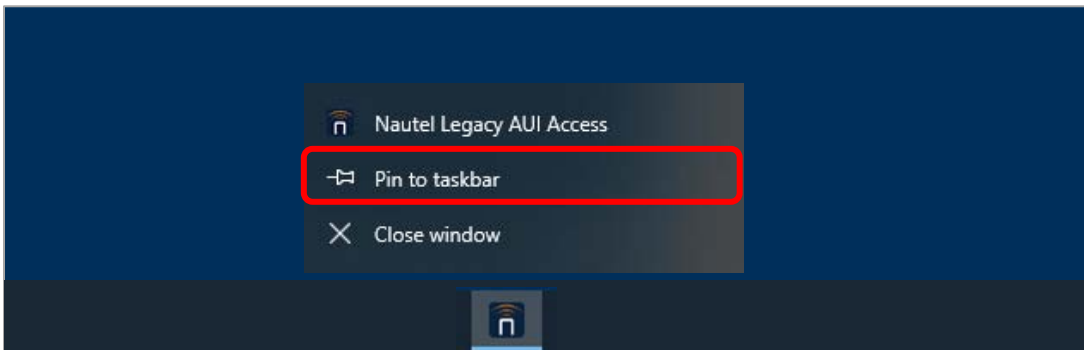


Figure 6: Adding AUI Launcher to Windows Taskbar

If you have any questions or require additional assistance, please contact Nautel's Customer Service Department at:

Telephone: 1-902-823-5100 or 1-877-628-8353 (Canada & USA)

Email: support@nautel.com

